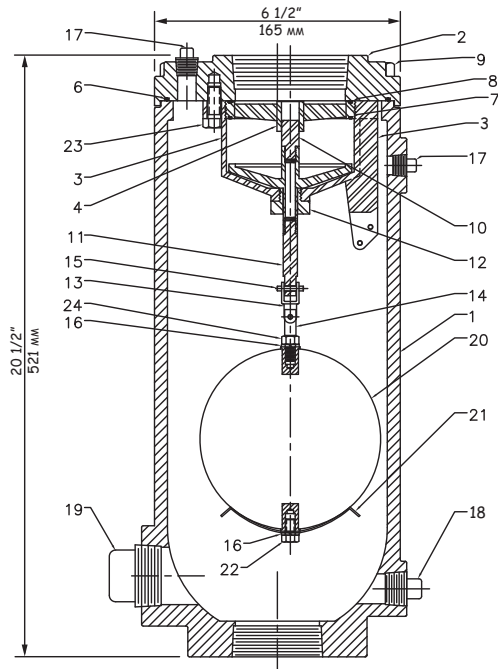


Air & Vacuum Valve

FIGURE X935SS

FIGURE X935SS



SPECIFICATION

The wastewater air & vacuum valve shall automatically exhaust air and gases while the pipeline is being filled and close tight when the system is full and pressurized. It shall reopen to admit air into the pipe during draining or when a negative pressure exists.

The air & vacuum valve shall have a one-piece body and a single spherical float. The body, cover, external fasteners, float and internal trim shall be made of Type 316 stainless steel. Floats and/or trim components made of bronze, plastic or other non-metallic materials are not acceptable. The seat, gaskets and seals shall be Buna-N rubber.

The valve body shall have 2-inch NPT pipeline connection and 1-inch or 2-inch NPT outlet connection as specified. There shall be 2-inch plugged port near the bottom to facilitate cleanout of large solids in addition to a 1/2-inch plugged connection near the top and a 1-inch plugged connection near the bottom for the installation of flushing attachments. Flushing attachments consisting of stainless steel pipe nipples and inlet isolating, flushing and blow off stainless steel ball valves along with quick connect couplings and 5 feet (1.5 Meters) of rubber hose shall be supplied when specified.

The air & vacuum valve shall be Dur-O-Vent™ Figure X935SS as manufactured by GA Industries, Inc., Cranberry Township, PA USA.

SIZING FOR PIPE FILLING and DRAINING

Refer to Page 7 for Air & Vacuum Valve sizing guidelines.

PARTS LIST

1. BODY - Stainless Steel, ASTM A351 Gr CF8M (316 SS)
2. COVER - Stainless Steel, ASTM A351 Gr CF8M (316 SS)
3. CAGE - Stainless Steel, ASTM A351 Gr CF8M (316 SS)
4. SEAT - Stainless Steel, ASTM A351 Gr CF8M (316 SS)
5. PLUG - Stainless Steel, ASTM A351 Gr CF8M (316 SS)
6. COVER O-RING - Buna-N Rubber
7. RENEWABLE SEAT - Buna-N Rubber
8. UPPER SEAT O-RING - Buna-N Rubber
9. COVER BOLTS - Stainless Steel, Type 316
10. UPPER PLUG EXTENSION - Stainless Steel, Type 316
11. CONNECTOR - Stainless Steel, Type 316
12. BUSHING - Stainless Steel, Type 316
13. UNIVERSAL COUPLING - Stainless Steel, Type 316
14. FLOAT ROD - Stainless Steel, Type 316
15. SPRING PIN - Stainless Steel, Type 302
16. LOCK WASHER - Stainless Steel, Type 18-8
17. PIPE PLUG, 1/2" - Stainless Steel, Type 18-8
18. PIPE PLUG, 1" - Stainless Steel, Type 18-8
19. PIPE PLUG, 2" - Stainless Steel, Type 18-8
20. FLOAT BALL - Stainless Steel, Type 316
21. FLOAT HOOD - Stainless Steel, Type 316
22. FLOAT BALL SCREW - Stainless Steel, Type 18-8
23. CAGE BOLTS - Stainless Steel, Type 18-8
24. HEX NUT - Stainless Steel, Type 18-8

ENGINEERING DATA

- Valve body rated at 300 PSI (2,069 kPa) up to 150F (66C)
- Valve body tested at 450 PSI (3,103 kPa)
- Float tested at 1,000 PSI (6,895 kPa)
- Dry weight 60 lbs. (27 kg)

CONNECTIONS

- 2" NPT inlet x 1" NPT outlet (Standard)
- 2" NPT inlet x 2" NPT outlet (Standard)
- DN50 PN16 stainless steel flanged inlet (Optional)

WORKING PRESSURE

Minimum working pressure 10 PSI (69 kPa) required for tight seating

Maximum working pressure:
150 PSI (1,034 kPa)

Consult factory if working pressure less than 10 PSI or greater than 150 PSI