

SUPER HIGH CAPACITY

Pressure Type Air Release Valve



FIG. 923

AIR RELEASE VALVES

HI-CAPACITY AIR RELEASE

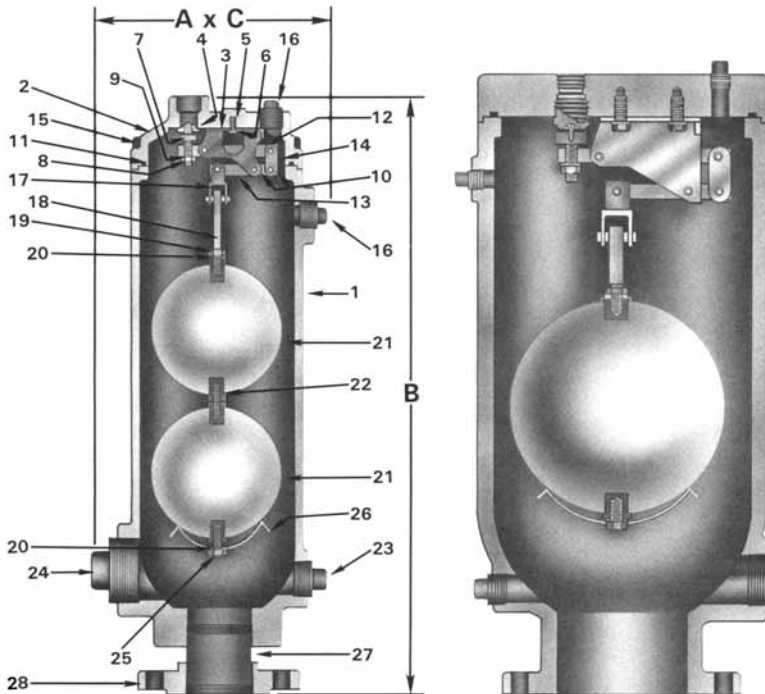


FIG. 923 4" SIZE

6" SIZE

GENERAL DIMENSIONS

VALVE (INLET)	VALVE (OUTLET)	A (LENGTH)	B (HEIGHT)	C (WIDTH)	WEIGHT (LBS.)
4" FLG.*	1" NPT	8-1/2"	22-1/2"	6-3/8"	100
*Also available with 2" or 3" NPT Inlet					
6" FLG.	1" NPT	15"	29-1/2"	13-1/2"	320

ENGINEERING SPECIFICATION

The Air Release Valve shall be float operated and shall incorporate a compound lever mechanism to enable the valve to automatically release accumulated air from a fluid system while that system is pressurized and operating.

The Air Release Valve shall close drop tight, incorporating an adjustable Buna-N orifice button. All internal metal parts shall be of stainless steel. The float shall be of stainless steel. The linkage/lever mechanism shall be able to be removed from the valve without disassembly of the mechanism, and shall be designed to prevent jamming.

The body and cover shall be of cast iron conforming to ASTM A126 Class B, and shall be designed to withstand a test pressure of 450 PSIG.

The Air Release Valves shall be as manufactured by GA Industries, Inc., their Figure 923.

PARTS LIST

1. BODY - Cast Iron A126 Class B
2. COVER - Cast Iron A126 Class B
3. LEVERAGE BRACKET - 316 Stainless Steel
4. ORIFICE - 316 Stainless Steel
5. BRACKET CAP SCREWS - 18-8 Stainless Steel
6. BRACKET LOCKWASHERS - 18-8 Stainless Steel
7. ORIFICE BUTTON - 18-8 Stainless Steel
8. HEX NUT - 18-8 Stainless Steel
9. LOCKWASHER - 18-8 Stainless Steel
10. COILED SPRING PINS - 302 Stainless Steel
11. O-RING - Buna-N
12. LEVERAGE ARM - 316 Stainless Steel
13. LINKAGE FLOAT ARM - 316 Stainless Steel
14. VALVE LINK (Air Release) - 316 Stainless Steel
15. COVER BOLTS - Steel Grade 2
16. PIPE PLUG 1/2" NPT - Steel (Commercial)
17. UNIVERSAL COUPLING - 316 Stainless Steel
18. BALL FLOAT ARM - 316 Stainless Steel
19. HEX NUT - 18-8 Stainless Steel
20. LOCKWASHER - 18-8 Stainless Steel
21. FLOAT BALL - 316 Stainless Steel
22. CONNECTOR - 18-8 Stainless Steel
23. PIPE PLUG 1" NPT - Cast Iron
24. PIPE PLUG 2" NPT - Cast Iron
25. HEX HEAD CAP SCREW - 18-8 Stainless Steel
26. FLOAT HOOD - 316 Stainless Steel
27. CLOSE NIPPLE - Steel SCH. 80
28. COMPANION FLANGE - Cast Iron

ENGINEERING DATA

Pressure Rating:

CL.125 Flanged Inlet = 200 PSIG WOG (300 psi test)
 CL.250 Flanged Inlet = 400 PSIG WOG (600 psi test)
 Float tested to 1000 psi.

Working Pressure:

4" - 10 to 150 psi with 1/2" orifice (Standard-Fig. 923)
 10 to 300 psi with 3/8" orifice (Optional-Fig. 923-H)
 6" - 10 to 150 psi with 1" orifice (Standard-Fig. 923)
 10 to 300 psi with 11/16" orifice (Optional-Fig. 923-H)

CONSULT FACTORY IF OPERATING PRESSURE IS LESS THAN 10 PSI.

Maximum Venting Rate:

Fig. 923
 4" @ 150 psi with 1/2" orifice = 417.3 SCFM
 6" @ 150 psi with 1" orifice = 1669.4 SCFM

Fig. 922-H

4" @ 300 psi with 3/8" orifice = 448.6 SCFM
 6" @ 300 psi with 11/16" orifice = 1507.7 SCFM

FOR SIZING AND LOCATING SEE PAGES 16-17.
 OTHER ORIFICES AVAILABLE; CONSULT FACTORY.

Inlet Connection:

ANSI B16.1 CL.125 (Standard)
 ANSI B16.1 CL.250 (Optional)

Where to Install Air Valves:

1. Peaks
2. Increased Down Slope
3. Decrease in Upward Slope
4. Long Ascents
5. Long Descents
6. Long Horizontals
7. Pumps
8. Large Valves, Cylinders and Piping Loops