

SERIES 800 Butterfly Valves

3" TO 20" WAFER
AWWA CLASS 150B

WAFER (LEVER OPERATOR SHOWN)



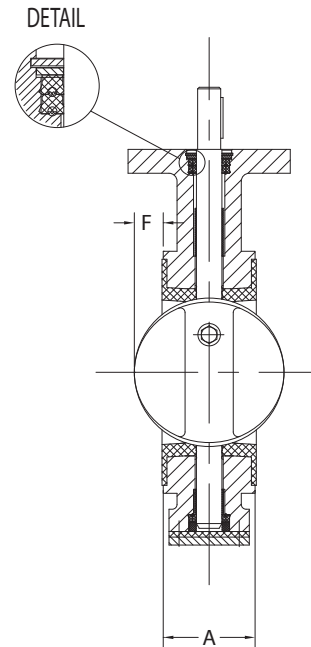
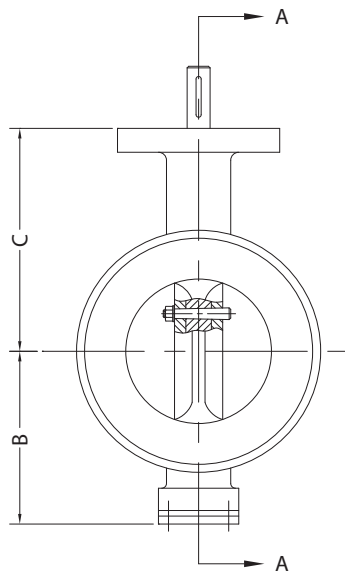
PRESSURE RATING

Class 150B

150 PSI Working Pressure
300 PSI Test Pressure

FEATURES

1. Conforms with AWWA C504 (latest revision)
2. High strength ductile iron body
3. Fully rubber lined waterway with integral rubber seat vulcanized to body
4. Streamlined epoxy coated ductile iron disc with 316 stainless steel seat edge
5. Stainless steel shaft sized per AWWA C504
6. 316SS backed nylon low friction shaft bearings
7. Self-adjusting and wear compensating U-cup shaft seals
8. External 2-part epoxy coating (Gray)
9. Integral MSS SP-101 actuator mounting pad



SECTION A-A

MATERIALS OF CONSTRUCTION

COMPONENT	STANDARD MATERIAL
Body	Ductile Iron, ASTM A536 Grade 65-45-12
Disc	Ductile Iron, ASTM A536 Grade 65-45-12 with 316 Stainless Steel Seat Edge, NSF-61 Epoxy Coated
Seat	Buna-N Rubber
Shaft	Class 150B – Type 304 Stainless Steel Class 250B – Type 17-4PH Condition H1150 Stainless Steel
Shaft Bearings	316SS and Nylon
Shaft Packing	Buna-N Rubber

GENERAL DIMENSIONS

SIZE	A	B	C	F	WGT
3"	2	3.50	4.75	0.50	12
4"	2¼	4.25	5.50	0.88	18
6"	2¾	5.13	6.50	1.62	28
8"	3	6.25	7.88	2.50	47
10"	3½	9.06	9.00	3.44	60
12"	3¾	9.84	10.56	4.31	84
14"	3¾	11.00	11.81	5.12	165
16"	4¼	12.63	13.44	5.94	250
18"	4¾	13.75	14.38	6.69	300
20"	5¼	14.56	16.00	7.44	385

- NOTES:**
1. Dimensions in inches, weight in pounds. Weight does not include actuator.
 2. Dimension "F" is minimum clearance required for valve to fully open.