

# SERIES 800 Butterfly Valves

30" AND LARGER MECHANICAL JOINT ENDS

AWWA C504 CLASS 150B AND 250B

## MJ ENDS BUTTERFLY (ACTUATOR NOT SHOWN)

## FEATURES

### PRESSURE RATING

#### Class 150B

150 PSI Working Pressure

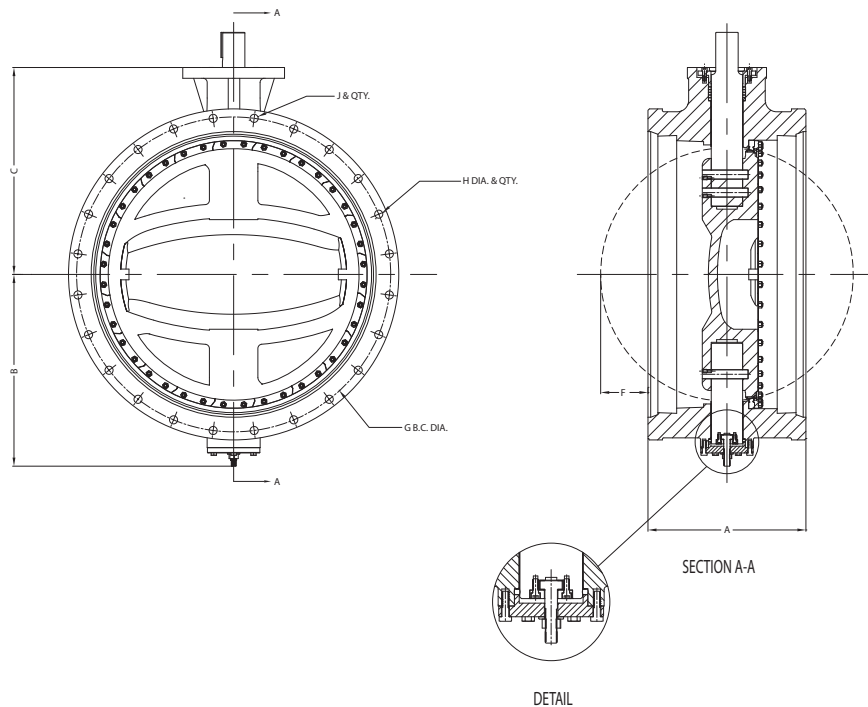
300 PSI Test Pressure

#### Class 250B

250 PSI Working Pressure

500 PSI Test Pressure

1. Conforms with AWWA C504 (latest revision)
2. Offset ductile iron disc for 360 degree uninterrupted sealing
3. Replaceable rubber seat located in the body
4. Rubber seat is field adjustable and replaceable using common hand tools, no epoxy required
5. 316SS backed PTFE low friction shaft bearings
6. Combination V-ring and compression packing shaft seals with adjustable gland
7. Internal and external NSF-61 epoxy coated
8. Integral MSS SP-101 actuator mounting pad



### MATERIALS OF CONSTRUCTION PER AWWA C504

COMPONENT	STANDARD MATERIAL
Body	Class 150B – Cast Iron, ASTM A126 Class B, NSF-61 Epoxy Coated Class 250B – Ductile Iron, ASTM A536 Grade 65-45-12, NSF-61 Epoxy Coated
Disc	Ductile Iron, ASTM A536 Grade 65-45-12 with 316SS Seat Edge, NSF-61 Epoxy Coated
Seat	Buna-N Rubber
Seat Retainer	Type 316 Stainless Steel
Shaft	Class 150B – Type 304 Stainless Steel Class 250B – Type 17-4PH Condition H1150 Stainless Steel
Shaft Bearings	316SS Backed PTFE
Shaft Seals	PTFE V-Ring with Adjustable Compression Packing

### GENERAL DIMENSIONS

SIZE	A	B	C	F	G	H	WGT
30"	18	23.00	25.50	6.00	36.88	20 X 1"	1,750
36"	22	26.63	28.88	7.00	43.75	24 X 1"	2,550
42"	22	29.68	31.00	10.00	50.63	28 X 1¼"	3,350
48"	24	34.88	34.75	12.00	57.50	32 X 1¼"	4,600

### MJ END VALVE NOTES:

1. Mechanical Joint ends per ANSI/AWWA C111/A21.11.
2. Dimensions in inches, weight in pounds. Weight does not include actuator.