

# SERIES 800 Butterfly Valves

3" TO 24" ANSI CLASS 125 FLANGED

AWWA C504 CLASS 150B & 250B

## FLANGED BUTTERFLY (ACTUATOR NOT SHOWN)



### PRESSURE RATING

#### Class 150B

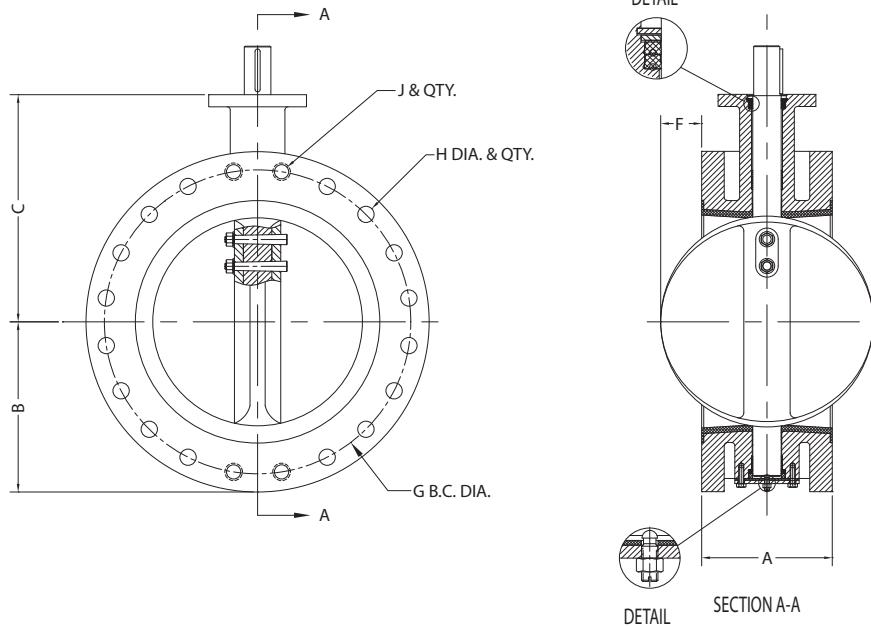
150 PSI Working Pressure  
300 PSI Test Pressure

#### Class 250B

250 PSI Working Pressure  
500 PSI Test Pressure

## FEATURES

1. Conforms with AWWA C504 (*latest revision*)
2. High strength ductile iron body
3. Fully rubber lined waterway with integral rubber seat vulcanized to body and tested to ASTM D429 Method B
4. Streamlined epoxy coated ductile iron disc with 316 stainless steel seat edge
5. One-piece stainless steel shaft sized per AWWA C504
6. 316SS backed nylon low friction shaft bearings
7. Self-adjusting and wear compensating U-cup shaft seals
8. External 2-part epoxy coating (Gray)
9. Integral MSS SP-101 actuator mounting pad



### MATERIALS OF CONSTRUCTION

COMPONENT	STANDARD MATERIAL
Body	Ductile Iron, ASTM A536 Grade 65-45-12
Disc	Ductile Iron, ASTM A536 Grade 65-45-12 with 316 Stainless Steel Seat Edge, NSF-61 Epoxy Coated
Seat	Buna-N Rubber
Shaft	Class 150B – Type 304 Stainless Steel Class 250B – Type 17-4PH Condition H1150 Stainless Steel
Shaft Bearings	316SS and Nylon
Shaft Packing	Buna-N Rubber

### GENERAL DIMENSIONS

SIZE	A	B	C	F	G	H	J	WGT
3"	5	3.75	6.25	-	6.00	4 X ¾"	-	26
4"	5	4.50	7.00	-	7.50	8 X ¾"	-	39
6"	5	5.88	8.00	0.50	9.50	8 X ¾"	-	64
8"	6	6.75	9.50	1.00	11.75	8 X ¾"	-	108
10"	8	8.06	10.75	1.00	14.25	12 X 1"	-	148
12"	8	9.50	12.31	2.00	17.00	12 X 1"	-	201
14"	8	10.56	14.00	3.00	18.75	12 X 1½"	-	259
16"	8	12.31	15.00	4.00	21.25	12 X 1½"	4 X 1" - 8UNC	321
18"	8	13.00	16.50	5.00	22.75	12 X 1½"	4 X 1½" - 8UNC	403
20"	8	14.62	18.00	6.00	25.00	16 X 1¼"	4 X 1½" - 8UNC	496
24"	8	17.12	22.50	8.00	29.50	16 X 1¾"	4 X 1¼" - 8UNC	726

- NOTES:**
1. Flange drilling per ANSI B16.1 Class 125 for both Class 150B and 250B valves.
  2. Dimension "F" is minimum clearance required for valve to fully open.
  3. 16" and larger valves have 4 tapped bolt holes in each flange, 2 at the top and 2 at the bottom straddling the shaft centerline, per Dimension G.
  4. Dimensions in inches, weight in pounds. Weight does not include actuator.