

SERIES 800 Butterfly Valves

30" AND LARGER

AWWA C504 CLASS 150B AND 250B

FLANGED BUTTERFLY (ACTUATOR NOT SHOWN)



PRESSURE RATING

Class 150B

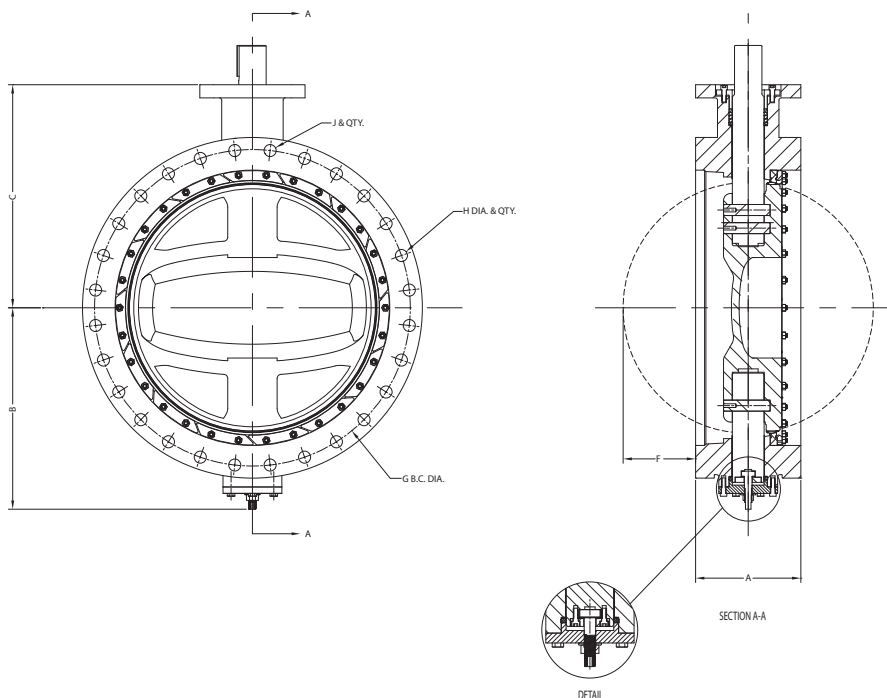
150 PSI Working Pressure
300 PSI Test Pressure

Class 250B

250 PSI Working Pressure
500 PSI Test Pressure

FEATURES

1. Conforms with AWWA C504 (latest revision)
2. Offset ductile iron disc for 360 degree uninterrupted sealing
3. Replaceable rubber seat located in the body
4. Rubber seat is field adjustable and replaceable using common hand tools, no epoxy required
5. 316SS backed PTFE low friction shaft bearings
6. Combination V-ring and compression packing shaft seals with adjustable gland
7. Internal and external NSF-61 epoxy coated
8. Integral MSS SP-101 actuator mounting pad



MATERIALS OF CONSTRUCTION PER AWWA C504

COMPONENT	STANDARD MATERIAL
Body	Class 150B – Cast Iron, ASTM A126 Class B, NSF-61 Epoxy Coated Class 250B – Ductile Iron, ASTM A536 Grade 65-45-12, NSF-61 Epoxy Coated
Disc	Ductile Iron, ASTM A536 Grade 65-45-12 with 316SS Seat Edge, NSF-61 Epoxy Coated
Seat	Buna-N Rubber
Seat Retainer	Type 316 Stainless Steel
Shaft	Class 150B – Type 304 Stainless Steel Class 250B – Type 17-4PH Condition H1150 Stainless Steel
Shaft Bearings	316SS Backed PTFE
Shaft Seals	PTFE V-Ring with Adjustable Compression Packing

GENERAL DIMENSIONS

SIZE	A	B	C	F	G	H	J	WGT
30"	12	23.00	25.50	9.00	34.00	24 X 1 1/4"	4 X 1 1/4" - 7UNC	1,700
36"	12	26.63	28.88	12.00	42.75	24 X 1 1/4"	4 X 1 1/2" - 6UNC	1,950
42"	12	29.68	31.00	15.00	49.50	30 X 1 1/4"	6 X 1 1/2" - 6UNC	3,300
48"	15	34.88	34.75	16.50	56.00	36 X 1 1/4"	8 X 1 1/2" - 6UNC	4,500

FLANGED VALVE NOTES:

1. Flange drilling per ANSI B16.1 Class 125 for both Class 150B and 250B.
2. Dimension "F" is minimum clearance required for valve to fully open.
3. Flanged valves have tapped bolt holes at top and bottom of both flanges. Dimension "G" indicates number and size of tapped holes.
4. Dimensions in inches, weight in pounds. Weight does not include actuator.