



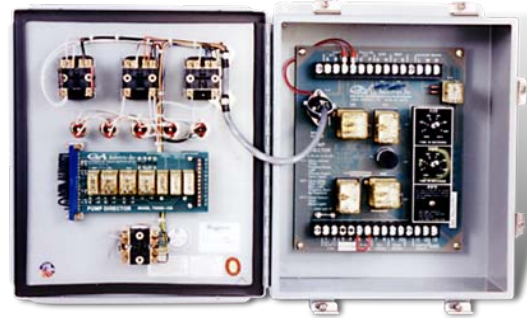
MODEL 7600 PUMP DIRECTOR

Pump Control Valve/Pump Motor Interface

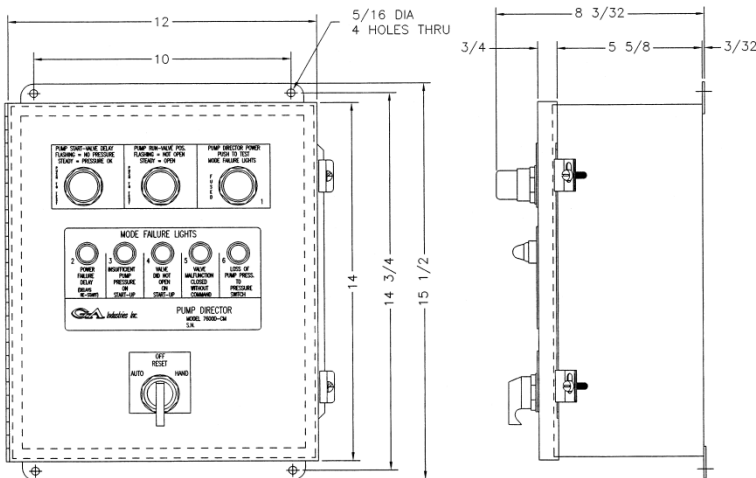
Pre-Wired Control Panel

The Pump Director Will:

1. Provide external electrical logic needed to sequence operation of pump motor and pump control valve
2. Provide proper normal and emergency operation of pump control valve
3. Simplify and reduce cost of field wiring and facilitate troubleshooting
4. Protect system from common pump and valve malfunctions
5. Provide local and remote status indication of normal and abnormal situations
6. Function with any GA Industries pump control valve



Dimensions:



Weight – 25 lbs

Function:

The GA Industries Model 7600 Pump Director is a pre-wired electrical control panel used to stop and start pumps and properly sequence the pump's operation with the companion GA Industries Electric Check, CHECKtronic® or AWWA Ball pump control valve.

The Pump Director accepts a remote or local "pump start" command and initiates a pump start/valve opening sequence. A local or remote "pump stop" command initiates a normal valve closure and pump shutdown.

Coded lights on the exterior provide visual indication of the sequence status.

Integral "Fault Mode" circuitry constantly monitors power and equipment operation and should a malfunction occur the Pump Director automatically shuts down the pumping operation to prevent damage to the pump, motor or pump control valve. Local and remote "fault" indicating lights afford quick assessment of the problem such as power outage, pump, motor or valve failure.

The Model 7600 uses rugged solid-state circuitry incorporating adjustable timers, push-to-test oil-tight lights, H-O-A selector switch and clearly labeled terminal connections for quick and simple field wiring. The Pump Director is housed in a NEMA 4 enameled steel enclosure suitable for wall or floor stand mounting.